



**10 DAYS PRIMATES & WILDLIFE OF UGANDA
2025**

Flying Safari-Private safari activities with English Speaking + English speaking driver/guide
B=breakfast, L=lunch, D=dinner

Important Notes:

Baggage on domestic flights is 15kg per person in soft bags.

**Prepared by: Hillary K. Langat.
East Africa Safari Specialist.**

P.O BOX 7393-00300 Nairobi Kenya

The Stables, Karen Road Suite No22.

Tel: +254 739 622451 | +254 711 872 234.

Skype: [aqshillary](#) | Whatsapp: +254 723 391 584

Email: Hillary.langat@meanderafricasafaris.com

Web: www.meanderafricasafaris.com.

Let's go for a journey

SAFARI OVERVIEW.

Our 10 Days Uganda Safari adventures into the Pearl of Africa and reveals the hidden experiences, the trip takes you mainly to the five major National Parks of the country, including Murchison Falls National Park, you will be able to see the rhinos on the way, while in the park you have an opportunity to see the world's most powerful falls as the wide River Nile water squeezes in 8meter wide gorge, the park is a home to 76 mammal species and 451 bird species. We drive to Kibale forest National Park - the park arguably to be the capital of primates and so famous for chimpanzee tracking, the park is a home to 70 mammal species, 13 species of primates, we engage in chimp trek before proceeding to Queen Elizabeth National park Uganda's most popular national park, there are several outstanding tourist attractions including the 95 species of mammals and 600 bird species, the game drive in the Kasenye plains, boat cruise on the beautiful Kazinga channel and the tree climbing lions. The trip continues to Bwindi Forest National Park for the major highlight of the trip - Gorilla trek, tracking can be done at 4 designated locations including Nkuringo, Rushaga, Ruhijja and Buhoma with a total of 18 Gorilla habituated families that can be tracked every single day. On your day of tracking visitors are allocated different families in the groups of 8 people and are allowed to view the Gorillas maximum of one hour per day. Trekking time depends on the group allocated to, ranging from 3 to 8 hours. After this unforgettable adventure, it will be time to head to Lake Mburo National Park, the smallest savannah national parks, and the only park where you can have a safari walk, while on the walk or on the game drive, several animals can be seen including big herds of zebras, Buffalo, Impala, Giraffes, Warthog and Waterbuck other wildlife can also be seen while on the 2 hour boat cruise including the crocodiles, hippos different birds including the colorful Kingfishers and the magnificent Fish Eagles.

Safari Highlights:

Ziwa Rhino Tracking at the Rhino Sanctuary

Visiting the top of the falls

Launch cruises in Murchison Falls and Queen Elizabeth and Lake Mburo

Private Game drives in Murchison, Lake Mburo and Queen Elizabeth

Gorilla Trekking

Chimpanzee trekking

Community activities in Bwindi

QUOTATION FULL ITINERARY.

Day 1: Arrive at Entebbe Airport - Entebbe Hotel (Approx. 10 -30 mins drive)

On your arrival at Entebbe Airport, you will be met and welcomed by our representative. He will be your tour and driver guide for the rest of the days you will be in the country. After the interaction and brief introduction, you will be transferred to your preferred Hotel in Entebbe for Overnight stay. Bed and Breakfast

- *Papyrus Guest House or Airport Guest House for Budget*
- *Boma Guest House or 2 Friends Guest House for Midrange*
- *Lake Victoria Serena/Protea Hotel Entebbe for Upmarket*

Day 2: Entebbe to Murchison Falls National Park (Approx. 5-6hrs drive)

After breakfast at the hotel, your driver guide will pick you for a transfer to Murchison Falls National Park. This journey will take you through the famous Luweero Triangle and a stopover at the Ziwa Rhino Sanctuary. Upon arrival at the sanctuary, enjoy a 1-2hrs walk as you track the Rhinos. This is the only place where one is able to see these in the wild. Have Lunch and later proceed with your journey to Murchison falls National Park via Masindi town. You will have another stop over the Top of the falls for a clear and magnificent views of the water forcing its self through a 7-meter gorge and drops to over 43 meters below with a thunderous roar hence forming a beautiful rainbow. Reach at your lodge in the evening for dinner and overnight stay. Full Board

- *Pakuba Safari Lodge for Budget*



- *Twiga Safari Lodge for Midrange*
- *Paraa Safari Lodge for Upmarket.*

Day 3: Game drive and Launch cruise to the bottom of the falls

Rise very early in the morning and set out for the game drive before sunrise. Murchison falls being Uganda's largest park, you will enjoy a variety of wildlife it has to offer including Lions, Leopards, Buffalos, Elephants, large numbers of Giraffes, Warthogs, Antelopes, Waterbucks and Bushbucks as well as the so many different bird species. After like 3-4hrs of the game drive, return to the Lodge for a late breakfast and relaxation. After Lunch, set out for the afternoon launch cruise to the bottom of the falls along the Victoria Nile. This 3hrs boat cruise will enable you to have a glance at a number of waters loving animals such as Hippos, Crocodiles, Buffalos and so many bird species like the kingfishers, Cormorants, Hornbills, Goliath herons, Egyptian geese, pelicans and bee-eaters. After the cruise, return to your Lodge for dinner and overnight stay. Full Board • *Pakuba Safari Lodge for Budget*

- *Twiga Safari Lodge for Midrange •*
- *Paraa Safari Lodge for Upmarket.*



Day 4: Depart for Kibale Forest National Park (Approx. 7- 8hrs drive)

Early morning have your breakfast at the lodge and depart for Kibale National Park. The Journey will take you through the Western Rift Valley's Albertine Escarpment as well as the green country side and traditional homesteads of the local people with in the Bunyoro and Toro Kingdoms. Upon arriving in Fort portal, clear days will give you a glimpse of the legendary snowcapped Mountain also famously known as the "Mountains of the Moon" (Mt Rwenzori). Kibale Forest National Park is a home to 13 primate species including the common Mans' closest Cousins (Chimpanzees). The Forest is also a home to over 325 bird species including the rare Green Breasted Pitta. Arrive at your Lodge in the evening. Full Board.

- *Isunga Lodge or Kibale Guest Cottages for Budget*
- *Turaco Tree Tops or Crater Safari Lodge - Standard rooms for Midrange*
- *Primates Lodge Kibale for Upmarket.*

Day 5: Chimpanzee tracking and Transfer to Queen Elizabeth National Park

Morning breakfast at your lodge and set out for a half day Chimpanzee tracking experience. You will be transferred to the park headquarters at Kanyanchu for a 30-40mins briefing and get to know more about the chimpanzees and their ways of living with in the forest. After this, you will then embark on your journey to search for these primates through the forest. On spotting the chimps, you are only given one Hour to be with them as you take videos and pictures. Along the way other primate species can be spotted such as the LHoest's Monkeys, Red tailed Monkeys, Blue Vervet Monkeys, and Black & White colobus Monkeys among others. Other animals that can be seen are Forest Elephants, Buffalos and a lot of bird species. After the tracking, return to your Lodge for Lunch and afternoon transfer to your next destination Queen Elizabeth National - one of country's best wildlife National parks with over 600 bird species, mammals like Lions, Leopards, elephants, buffaloes and so many others. Dinner and Overnight at your Lodge. Full Board

- *Warujojo Lodge or Twin Lakes Safari Lodge for Budget*
- *Kikorongo Safari Lodge or Buffalo Safari Lodge for Midrange*
- *Elephant plains Lodge for Upmarket*

Let's go for a journey



Day 6: Game drive and Boat ride along the Kazinga channel

After an early morning breakfast, depart for your morning game drive in Kasenyi areas. Look out for wildlife animals such as Lions, Leopards, Buffalos, Elephants, Antelopes, Warthogs, Waterbucks, Bushbucks and so on. Lunch and in the afternoon set out for the launch cruise along the Kazinga channel. The channel connects Lake Edward and Lake George. The channel is a home to one of Africa's largest hippo populations and bird species. this 3hrs boat cruise will enrich you with views of the water loving animals such as Hippos, Elephants, Buffalos, Crocodiles and other antelopes as well as bird species. Return to your Lodge in the evening for dinner and overnight stay.

- *Warujojo Lodge or Twin Lakes Safari Lodge for Budget*
- *Kikorongo Safari Lodge or Buffalo Safari Lodge for Midrange*
- *Elephant plains Lodge for Upmarket*



Day 7: Ishasha Sector and transfer to Bwindi Impenetrable Forest National Park (Approx. 5hrs drive)

After breakfast leave the northern side of the park and transfer to the southern sector of Ishasha. Game drive in the mid-morning hours searching for the rare tree climbing lions. Afternoon embark on your journey to the famous Bwindi Impenetrable Forest National Park. The park is well known for being a habitat to the endangered species of Mountain Gorillas. Check in at your Lodge. Full Board.

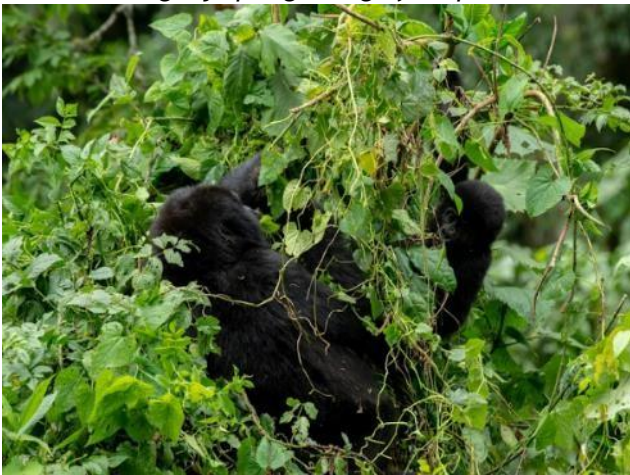
- *Ride for a Woman for budget*
- *Buhoma Haven Lodge or Gorilla Leisure Lodge for Midrange*
- *Mahogany Springs Lodge for upmarket*

Let's go for a journey

Day 8: Gorilla Trekking in Bwindi Impenetrable Forest National Park

The day is finally here for your unforgettable life time experience of meeting face to face with the giant mountain Gorillas. You will start your day with an early breakfast at your lodge and then transfer to the Park headquarters (Depending on which location you have booked your accommodation) for briefing. There are 4 sectors in which Gorilla trekking takes place with in Bwindi Forest. The northern side of the park is comprised of Buhoma and Ruhija Sector and the southern side comprised of Rushaga and Nkuringo sectors. After Briefing, you will start on your day's trek. Searching for the gorillas may take like 2-5hrs depending on where they were last spotted the previous day. Once they have been spotted, you will be given one hour to take videos, photos and also get a chance to ask the rangers and the guides any questions about these giant apes. Besides the great Apes, the forest is also a home to other wildlife and bird species such as butterflies, primates, mammals, frogs and so on which all can be seen along the way to the Gorillas. After seeing the Gorillas, you will then head back to your lodge and retire for the rest of the day. The whole day activity can take between 5 to 9hrs. Packed Lunch and hiring porters are highly recommended. If time permits, you will also visit the Ride 4 A Woman project in Buhoma and get a chance to interact with local women and also learn about their variety of hand work crafts made out of local materials like basket weaving and knitting. Dinner and overnight stay at your Lodge. Full Board

- *Ride for a Woman for budget*
- *Buhoma Haven Lodge or Gorilla Leisure Lodge for Midrange*
- *Mahogany Springs Lodge for upmarket*



Day 9: Bwindi to Lake Mburo National Park (Approx. 5hrs drive)

After your morning early breakfast, you will be driven to Lake Mburo National Park which is Uganda's smallest National Park. The journey will take you through stunning sceneries and views of the Ankole Kingdom with animal farms and different crop plantations. Arrive in time for Lunch at your Lodge in Lake Mburo. Afternoon set out for the boat cruise on Lake Mburo. Look out for Hippos, Buffalos and others. The park is famously known for harboring the largest number of Zebras in Uganda. Other animals that can be seen also include Impalas, Oribis, Giraffes (just been recently relocated from Murchison falls) and a lot of bird species. Overnight at your Lodge. Full Board.

- *Rwakobo Rock for Budget*
- *Kigarama Wilderness Lodge for Midrange*
- *Mihingo Lodge for Upmarket.*

Let's go for a journey



Day 10: Lake Mburo to Entebbe (Approx. 5hrs drive)

Morning breakfast and have a game drive as you exit the park. Look out for animals which are habitat in the park such as Impalas, Zebras, Oribi, Topi, Elands and so on. Lake Mburo also is one of the few parks where one can do a guided nature walk and still most of the animals as if you are on the game drive. The park also is a habitat to more than 300 bird species and also very famous for birders. Later drive back to Entebbe having Lunch en route. Stop over at the Equator for the water experience as well as Photography. Proceed and drop off at the Airport in time for your evening departure flight to your next destination or Back Home. Breakfast and Lunch.

END OF 10 DAYS UGANDA SAFARI ADVENTURE

Cost of the Package Per Person in USD

Type of Vehicle	1 Pax	2 Pax	3 Pax	4 Pax	5 Pax	6 Pax	7 Pax	SRS
Budget Accommodation	6160	4255	3780	3545	3405	3315	3245	505
Midrange Accommodation	6700	4720	4250	4010	3870	3775	3710	565
Upmarket Accommodation	8450	6050	5575	5340	5195	5105	5035	990

Number of Pax	1 Pax	2 Pax	3 Pax	4 Pax	5 Pax	6 Pax	7 Pax	SRS
Upmarket - Low season	7865	5620	5145	4910	4770	4670	4605	795

Low season (March, April, May, October, November)

Included in this Package

- All Airport transfers
- Ziwa Rhino Trek
- Accommodation in Entebbe on Bed and Breakfast • Accommodation in all National Parks on Full Board.
- All Ground transportation by 4x4 tourist vehicle
- Full time English-Speaking Guide
- 1 x Gorilla permits at USD 800 per person
- 1 x Chimpanzee trekking in Kibale \$250 per person
- Boat ride in Murchison Falls
- Boat ride on the Kazinga Channel
- Boat ride on Lake Mburo
- Game drives in Murchison Falls, Queen Elizabeth and Lake Mburo
- Water on board
- Visit to the Top of the falls
- Crater Lakes Drive

Excluded in this Package

- All Tips
- Drinks and Beverages - other than where it's included as part of accommodation package

Let's go for a journey

- International and domestic Air ticket
- Tourist insurance/ local health insurance
- Entrance visas to Uganda
- Activities not mentioned in program

Passenger Information:-

- Passengers should bring only soft sided bags on safaris
- All the passengers must have Identification Card/Passport with them for internal flights
- Baggage on internal flights is strictly limited to 15kgs per person (including hand luggage).
Any excess baggage will be charged by the airline at check-in.
- Passengers arriving in Kenya and Tanzania may be asked to present a valid Yellow Fever Vaccination Certificate.

The price quoted and services will be subject change depending on availability at the time of booking.

SAFARI TIPS.

While planning an East African Safari can seem like a daunting task, it doesn't have to be! Take the stress out of the experience with this helpful summary of the key things you need to think about before you jet off. Once you have all of them covered, you can sit back, relax, and look forward to your safari adventure.

Note: While this is a general guide to vaccinations required for your East African safari, you should always visit your doctor before your departure to obtain the best advice. A pre-trip health check and discussion of what vaccines are necessary for you, as well as how to deal with any unique health concerns, is imperative for a safe and enjoyable safari.

4. Clothing

On an East African safari, you should go for comfort and convenience when it comes to your clothing. Some of the things you should remember, include:

- Bring lightweight layers in both long and short lengths, plus socks, sleepwear, and swim wear.
- Always take a sweater or fleece jacket, as it can get quite chilly at night and during early mornings.
- Unless you're planning to trek, bulky hiking boots are rarely necessary. However a comfortable pair of lightweight trainers are a must and if you're planning on going to the beach after your safari, don't forget your flip-flops.
- Don't forget a hat, as you'll want to protect your face and scalp from the equatorial sun.
- It's not recommended to wear bright colors on safari, so consider buying some khaki, dark green, or darker colored clothes before your trip.

Passports & Visas

- A full passport with at least six month validity from the date of departure is generally required for travel.
- It is recommended that travelers contact the relevant Consulate/Embassy prior to travel for current visa requirements.

1. Applying for an East African Visa

One of the greatest things to happen to East African tourism over the past few years is the introduction of the East African visa. This visa allows you access to Kenya, Uganda, and Rwanda, and it's not only a time saver, but it also works out considerably cheaper than purchasing individual visas.

Let's go for a journey

To apply for the East African Visa, you'll need the following:

- A passport with at least six months validity
- \$100 USD application fee
- One standard sized passport photograph
- A completed application form
-

Tip: It's important that you apply for the East African visa with the country from which you will begin your travels. The visa will be valid for 90 days from the date marked in your passport.

Currency

- Credit & debit cards (MasterCard, American Express, Diners Club and Visa) are widely accepted in the cities.
- ATMs, banks and Bureau de Changes are found throughout major towns.
- Cash is king, although it is advised that you limit the amount of money you carry on your person.
- Some African countries will accept USD, GBP or EUROS, but Kenya requires Rand (KES),.

Most safaris are all-inclusive when it comes to food and drink, but you still need money for certain activities, local purchases, and tipping. That's why it's a good idea to carry some local currency with you.

Carrying US Dollars

The US dollar is widely accepted by international hotels and safari camps in East Africa and traveller cheques are also an option. Visa cards are usually a safe bet, no matter where you go.

Tip: You may want to consider changing money at the airports, as banks there usually give better exchange rates than hotels.

Health & Medical Facilities

***** All of the countries we represent are Ebola free *****

- Ensure that you have adequate travel & health insurance cover.
- South Africa has excellent medical care and facilities compare favourably with international standards.
- Malaria Vaccinations & Yellow Fever Certificates may be required for certain countries.
- Please consult your local doctor or travel clinic for advice prior to departure for appropriate medication.

2. Vaccinations and Health Requirements

When travelling to East Africa, there is only one shot that is compulsory, and that is the yellow fever vaccine, but there are other health precautions and vaccinations recommended by the WHO and CDC, which include:

- Typhoid
- Hepatitis A and B
- Meningitis
- Polio
- Influenza
- Measles, mumps, and rubella (MMR)

Tipping

Tipping is optional and dependent on the level of service. Although it is customary and considered an insult if you do not.

- As a guideline, a minimum of 10% should be added to restaurant bills.
- For guides and/or drivers please calculate USD 5 - 9 per person per day (or equivalent).

Let's go for a journey

- For rangers and trackers when on safari please calculate USD 5 - 9 per person per day (or equivalent).
- Portage ranges between USD 1 - 2 per person per service (or equivalent).
- For helpful petrol attendants, USD 1 (or equivalent) is perfectly acceptable. • When assisted by a car guard, it is a custom to tip USD 1

Tax

- Value-added-tax (VAT) of 14% / 16% is charged on most items.
- When visiting South Africa & Namibia, be sure to request a tax invoice for larger purchases as foreign visitors may claim back VAT paid on items taken out of the country when the total valued exceeds USD 18.93. It is advisable to keep these purchases in your hand luggage as you will need to present the items at the VAT Refund Administration for inspection and endorsement of the tax invoices when departing the country.
- A Tax Invoice must include the following:
 - The words "Tax Invoice"
 - A Tax Invoice number
 - The seller's VAT Registration number
 - Date of Issue of the Tax Invoice
 - The seller's name and address
 - The buyer's name and address
 - A full description of the goods purchased
 - The cost of the goods in Rands
 - The amount of VAT charged or a statement that VAT is included in the total cost

Wildlife Photography

- Animals don't stop for selfies, so be quick on the finger!
- Avoid getting too close, some animals are dangerous and in the wild - uncontrollable.
- Experiment at home in the garden and with the cat or dog to learn how your camera works and perfect your technique.
- For instance which is the anti-motion, or motion button? Does it have a landscape function? What sort of zoom range does it have? How do you set it to manual and change the aperture and shutter speed? • Observe the animals silently and with a minimum of disturbance - loud talking on game drives can frighten the wildlife away.
- Early morning and evening game drives offer exceptional lighting opportunities.
- don't be in a hurry to cover the most distance, stay in a well set up position for a while - you'll be amazed by what may enter your frame.
- most importantly, be sure to enjoy the whole view - not just the one from behind your lens. Stop and look around every once in a while!

Safety

Most areas are as safe as any other destination in the world, however, basic common-sense precautions should be used:

- Ask the concierge at your hotel which areas are safe to walk around in and when
- Travel in groups or pairs and always choose well-lit areas
- Order taxis or transport ahead of time
- Carry only as much cash as necessary
- Don't leave your property unattended
- Be aware of pickpockets and petty criminals
- Don't draw attention to yourself by flaunting valuables around openly or counting your cash at the ATM • Carry a copy of your passport in a separate section of your luggage

Let's go for a journey

What to Bring on Safari

Clothing

Most lodges and safari camps offer laundry as part of their service, so you can afford to pack lightly. •

2x khaki/brown cotton trousers

• 2x pairs khaki/brown shorts

• 3x long sleeved shirts/blouses

• 1x fleece/jersey

• 1x lightweight, waterproof jacket

• 1x Swimming costume

• 1x Walking or hiking boots

• 1x Sandals

• 4x short-sleeved shirts or T-shirts

• 5x underwear

• 5x socks

• 1x Hat with a brim

• 1x Gloves (if you really feel the cold) • 1x Sarong or kikoi type garment

The Must-Haves For Your East African Safari

Before you leave for your East African Safari, make sure to have these items packed and ready to go:

- Mosquito repellent
- Sunblock/Body lotion
- Any prescription drugs (keep these in your hand luggage)
- A camera
- Electrical adaptors
- Sunglasses
- Binoculars (a pair per person)
- A small bag or day pack

The Basics

- Sunscreen
- Toiletries
- Insect repellent
- Sunglasses
- Camera (with extra memory card and batteries)
- Binoculars
- Lip balm
- Hand wipes
- Wildlife checklist (or just paper) & a pen

**END OF OUR SERVICES!! WISHING YOU AN EXCELLENT
SAFARI!!KARIBU KENYA!! HAKUNA MATATA!!**

Let's go for a journey